



INSTALLATION MANUAL FOR LED CLOSET LIGHT CL106P

SAVE THESE INSTRUCTIONS - READ ALL INSTRUCTIONS CAREFULLY

WARNING



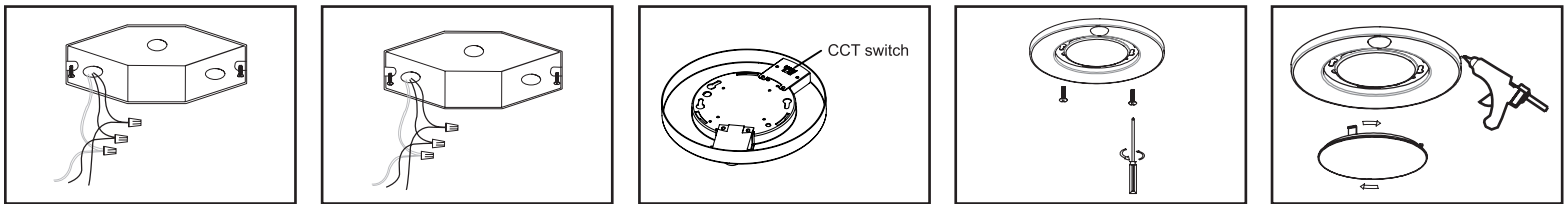
CAN ICES-005 (B) / NMB-005 (B)

- To prevent personal injury or product damage only licensed electricians/personnel should install fixture.
- To avoid electric shock or component damage disconnect power before attempting installation or servicing.
- This product must be installed in accordance with the National Electric Code (NEC) and all applicable Federal, State/Provincial and Local Electric Codes and Safety Standards.
- Risk of fire - Supply conductors (power wires) connecting the fixture must be rated minimum 90°C.
- This lamp is for 120VAC 60 Hz

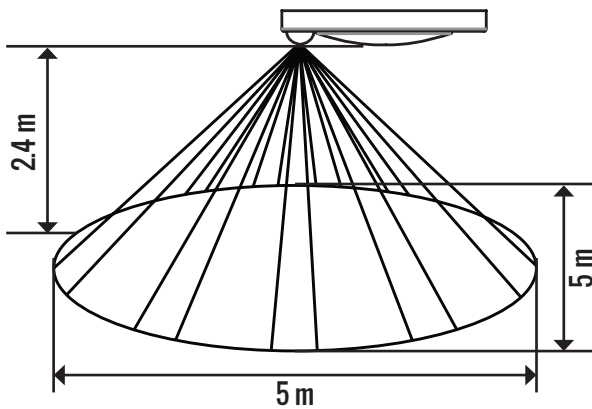
Voltage : 120V, 60Hz AC operation.
 Wattage: 10w.
 Lumens: 600 lumens.
 Diffuser: Translucent white PC Opal Diffuser.
 Hardware: All mounting screws and wire connectors
 Tool Use: Philips Screw Driver and Caulk Gun
 Warranty: Five year, limited warranty

INSTALLATION

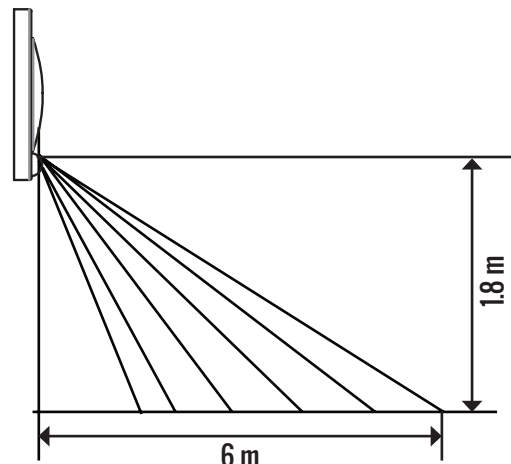
- 1) Install 2 screws (furnished) into the junction box. Do not tighten - leave screws loose to install fixture through keyless slot holes (Step 4).
- 2) Connect supply wires to fixture wires using proper size wire nuts. Black to Black - Load / White to White - Neutral / Green to Green - Ground. Push wiring into junction box.
- 3) Select desired color temperature by adjusting switch on back of fixture. 3000K - Warm White / 4000K - Cool White / 5000K - Daylight.
- 4) Using a Philips screwdriver, tighten fixture to junction box.
- 5) To complete installation, tighten diffuser on disk light in place - rotate clockwise.
- 6) Use caulking gun to put a watertight silicone bead around edge of fixture
- 7) Turn circuit back on



SENSOR DETECTION RANGE:



CEILING MOUNT SENSOR DETECTION RANGE



SIDE VIEW
 WALL MOUNT SENSOR DETECTION RANGE

When motion is detected, it automatically turning lights ON and turn the lights off after 30 seconds when the room is vacated.